

MORE NOTES ON THE GENUS *PSEUDOLIPARIS* (ORCHIDACEAE, MALAXIDINAE)

HANNA B. MARGOŃSKA & DARIUSZ L. SZLACHETKO

Abstract: Two new species of the genus *Pseudoliparis* Finet (Orchidaceae, Malaxidinae) are described from the Solomon Islands – *P. orbicularis* Marg. & Szlach., *sp. nov.* and *P. magnicallosa* Marg. & Szlach., *sp. nov.*. Their taxonomic affinities are briefly discussed. Additionally, two species from the Philippines are transferred to *Pseudoliparis*.

Key words: Magnoliophyta, Liliopsida, Orchidaceae, *Pseudoliparis*, taxonomy, Solomon Islands, Philippines

Hanna B. Margońska & Dariusz L. Szlachetko, Department of Plant Taxonomy and Nature Conservation, Gdańsk University, Al. Legionów 9, PL-80-441 Gdańsk, Poland, e-mail: biodarek@univ.gda.pl

Collecting data to a taxonomic revision of the paleotropical genus *Pseudoliparis* Finet (Orchidaceae, Malaxidinae), we verified herbarium and spirit collections kept in the Royal Botanical Gardens in Kew. While examining those materials from the Solomon Islands we found plants which in our opinion represent two new species.

Pseudoliparis orbicularis Marg. & Szlach.,
sp. nov. (Fig. 1)

Sepali late ovales. Petali obovato-ovales. Labellum hippocrepiforme rotundum, cum incrassationibus duobus reniformibus utrinque basi gynostemii sitis. Gynostemium basi processu minutissimo praeditum.

Leaves ovate, short attenuate, acute, 3–5-nerved, prominent beneath, green. Floral bracts 3–5 mm long, 0.8–1.2 mm wide, lanceolate to narrowly triangular, attenuate, acute. Inflorescence 10–20-flowered, racemose. Flowers widely spread, dull orange with pink-purple calli on base of lip. Sepals with nerves parallel, often with anastomoses. Lateral sepals 3.8–4.1 mm long, 2.9–3.2 mm wide, distinctly oblique, broadly ovate to nearly orbicular, subacute to subapiculate, 4-nerved. Dorsal sepal 4.2–4.4 mm long, 3.4–3.6 mm wide, broadly ovate to nearly cordate, subacute to subapiculate, 5-nerved. Petals 3.4–3.6 mm long, 2.4–2.7 mm wide, broadly ligulate to obovate, subacute to subapiculate, 3-nerved. Lip 4.7–4.9 mm

long, 4.2–4.5 mm wide, hippocrepiform, orbicular in outline; margins entire, apical part of lip with moderately incurved margin; lateral lobes with long falcate auricles, nearly touching each other at apex; cavity with 2 large, parallel, reniform calli; connection with gynostemium distinctly convex. Gynostemium 2.1–2.3 mm long, *ca* 1 mm wide, dorsal projection very small about 0.1 mm long and wide, suborbicular.

TYPE: SOLOMON ISLANDS. Rendova track from Ughela village to Rendova Peak, 827,7' S, 15721,3' E, 11.09.1991, B. A. Lewis 18 (Holotype: K-spirit).

ETYMOLOGY. An allusion to the lip form.

ECOLOGY. Terrestrial, ridge top mountain forest. Flowering in September.

DISTRIBUTION. Known so far from the type collection only.

NOTE. Plants similar to *Pseudoliparis latipetala* (J. J. Sm.) Marg. & Szlach., from which it differs in the following: lip orbicular in general outline, lip cavity with large, reniform calli, and gynostemium with very small, suborbicular, dorsal projection.

Pseudoliparis magnicallosa Marg. & Szlach.,
sp. nov. (Fig. 2)

Sepali late ovales subrotundati. Petali obovato-lingulati. Labellum sagittiforme cum cavo fissurato rimis cras-

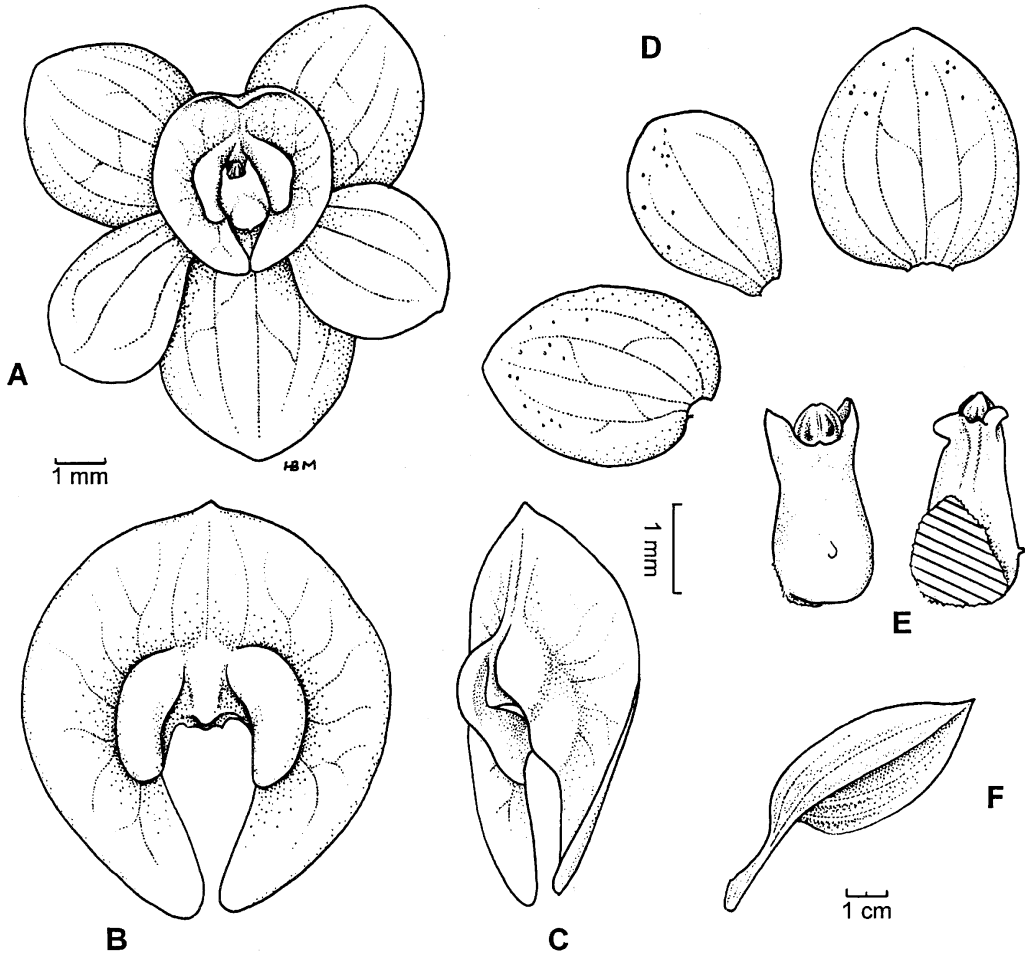


Fig. 1. *Pseudoliparis orbicularis* Marg. & Szlach., *sp. nov.* A – flower, B – lip, frontal view, C – lip, side view, D – tepals, E – gynostemium, dorsal and bottom view, F – leaf (drawn from holotype K-spirit. coll., *P. B. A. Lewis 18*).

sis concavisque separatis. Gynostemium processo magno ovali dorsali praeditum.

Plants 18–23 cm tall. Rhizome 1.2–2.4 mm in diameter, stem-like, creeping, rooting, covered by remnants of old leaf sheaths or scales. Stem about 10 cm high, erect, usually covered by leaf sheaths. Leaves 3.0–5.8 cm long, 1.2–2.4 cm wide, ovate or sometimes oblong-ovate, short attenuate, acute, with 3–5 nerves, prominent beneath, green. Floral bracts 3–6 mm long, 0.8–1.4 mm wide, lanceolate to narrowly triangular, attenuate, acute. Inflores-

cence 10–20-flowered, racemose. Flowers about 5 mm in diameter, spread, green. Tepals with parallel and unbranched nerves. Lateral sepals 2.4–2.6 mm long, 1.8–1.9 mm wide, oblique, broadly ovate, subapiculate, 3-nerved. Dorsal sepal 2.5–2.7 mm long, 2.2–2.3 mm wide, broadly ovate to nearly orbicular, subapiculate, 3-nerved. Petals 2.4–2.5 mm long, 1.3–1.4 mm wide, broadly ligulate to obovate, subapiculate, 1-nerved. Lip 1.7–1.8 mm long, 2.3–2.5 mm wide, sagittate in outline, margins entire; lateral lobes semi-obovate, with short and moderately falcate auricles, con-

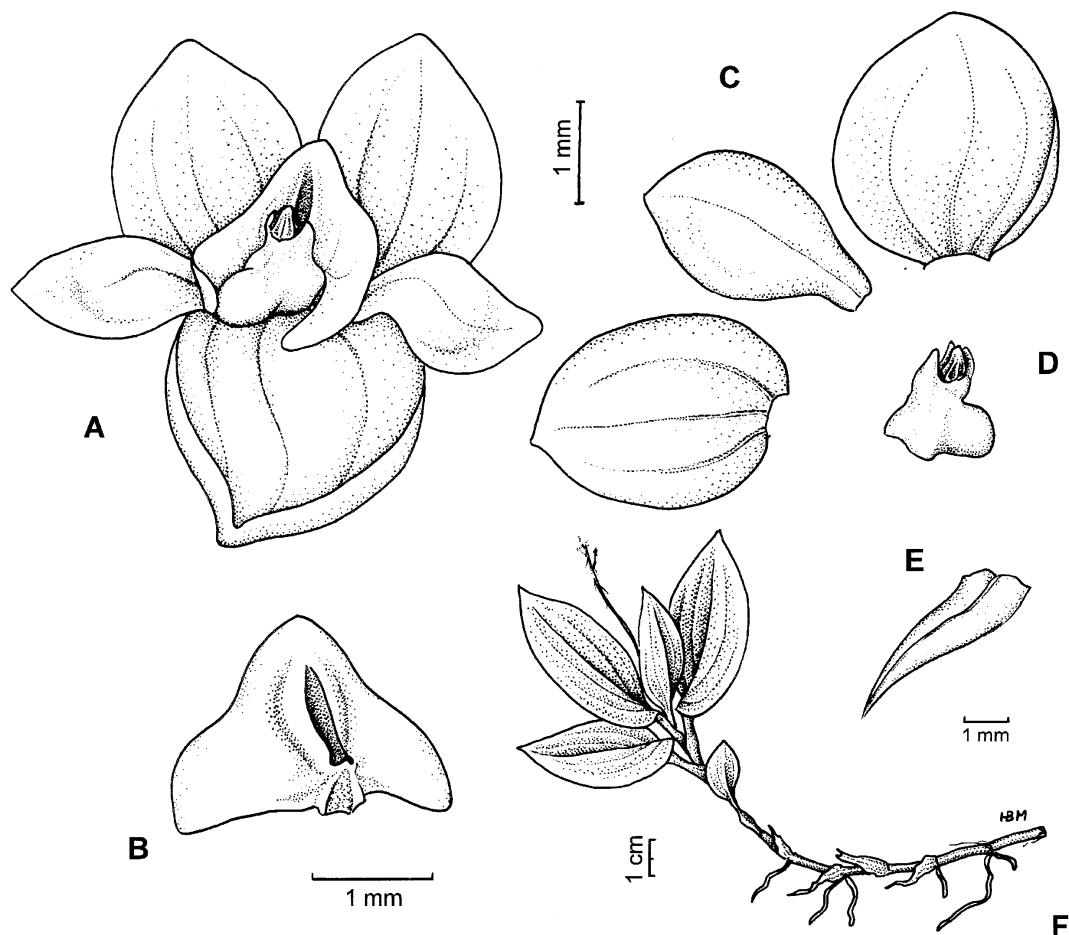


Fig. 2. *Pseudoliparis magnicallosa* Marg. & Szlach., *sp. nov.* A – flower, B – lip, frontal view, C – tepals, D – gynostemium, side view, E – floral bract, F – plant with inflorescence (drawn from holotype K, P. Cribb & J. Campbell 5105).

vergent; cavity narrowly oblong, deep, surrounded by thick and prominent fold, basally closed by triangular callus. Gynostemium 1.0–1.2 mm long, *ca* 0.6–0.8 mm wide, in front of column with large, strongly prominent, ovate callus: 0.5–0.6 mm long, 0.4–0.5 mm in diameter.

TYPE: SOLOMON ISLANDS. Western part, Kolombangara, South side, about 5 km inland from Ringgi Core, 0.11.1987, P. Cribb & J. Campbell 5105 (HOLOTYPE: K).

ETYMOLOGY. An allusion to the large callus on the dorsal surface of the gynostemium.

ECOLOGY. Terrestrial, in leaf litter, on ridge in montane forest. Flowering in November.

DISTRIBUTION. Known only from the type collection. Alt.: 550 m.

NOTE. This plant, like the previous one, seems to be related to *Pseudoliparis latipetala* (J. J. Sm.) Marg. & Szlach. The most characteristic features of *Pseudoliparis magnicallosa* are: lip sagittate in outline with narrowly oblong, deep cavity, and large, strongly prominent, ovate projection on the dorsal surface of the gynostemium.

During the course of our studies on the genus *Pseudoliparis* it appeared obvious to us that two species from the Philippines should be transferred to this genus. We validate below the appropriate new combinations.

Pseudoliparis arietina (Ames) Marg. & Szlach., *comb. nov.*

Basionym: *Malaxis arietina* Ames, Philipp. Journ. Sc., Bot. **8**: 411. 1913 (1914).

Pseudoliparis ramosii (Ames) Marg. & Szlach., *comb. nov.*

Basionym: *Malaxis ramosii* Ames, Philipp. Journ. Sc., Bot. **6**: 45. 1911.

ACKNOWLEDGMENTS. We are grateful to the Curators of B, BM, K, P and W for their hospitality during personal visits, the Curator of B and L for the loan of herbarium materials, and Prof. Dr. Ryszard Ochyra for Latinizing the diagnoses. This study was financed by KBN grants no. 6P04C-063-15 and 6P04C-055-16.

Received 4 September 2000